

## TITANIUM Adjustable Total Prosthesis

CODE  
TAP 07.55

Titanium GR. 2

PATENTED

The features of this prosthesis are:

- ▶ length of the prosthesis to be obtained either by compression or extension of the stem
- ▶ inclination of the flange adjustable by hand
- ▶ flange with 15 holes of 0.4 mm. diameter allowing penetration of connective tissue.

In order to avoid extrusion, an autologous cartilage graft must be interposed between the flange of the prosthesis and the tympanic membrane.

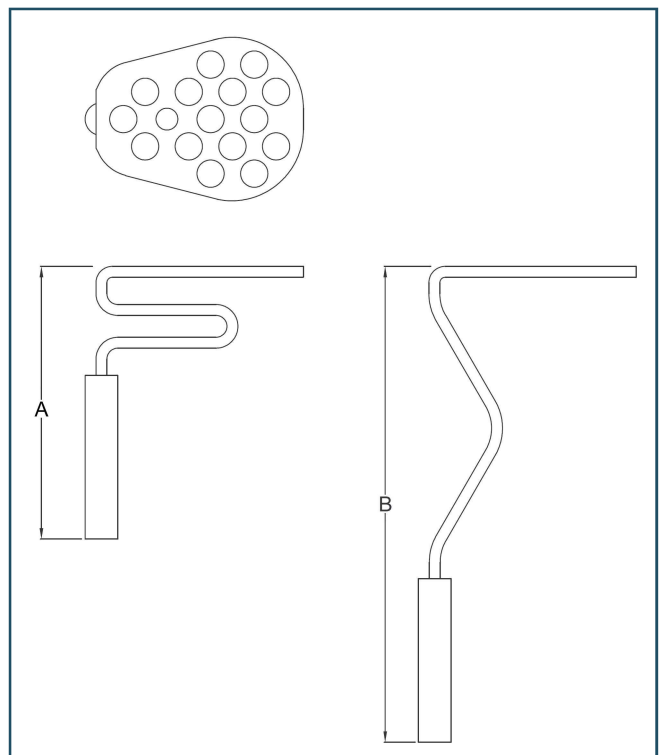
### Dimensions

Flange dimensions: mm 3.80 x mm 3.00

Total length: from mm 5.00 (A)  
to mm 8.50 (B)

### Packaging

Dispenser box containing 6  
sterile, individually packaged  
implants.



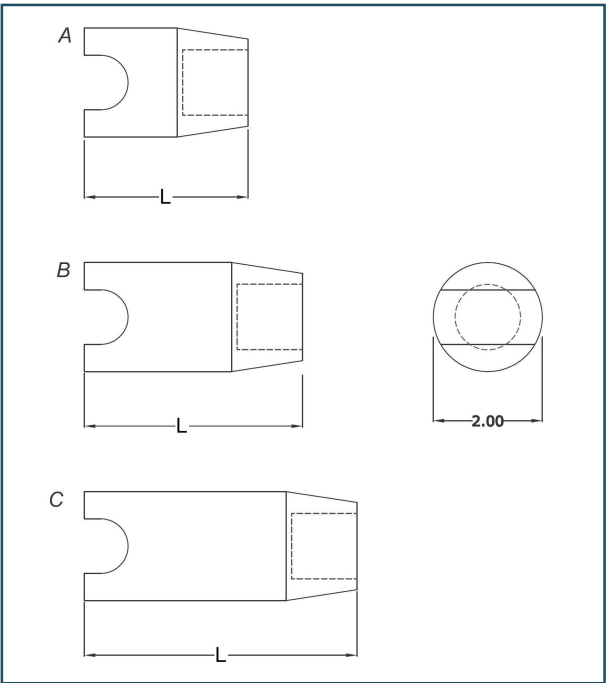
TITANIUM  
Partial Prosthesis

CODE  
PAP 07.56

Titanium GR. 2

Titanium partial prosthesis for replacement of the link between the hammer of the malleus and stapes.

	Total length (L)	Code
A	3.00 mm	PAP 07.56.300
B	4.00 mm	PAP 07.56.400
C	5.00 mm	PAP 07.56.500



**Dimensions**

Columella outside diameter: 2.00 mm

Columella inside diameter: 1.20 mm

Total length:

3.00 - 4.00 - 5.00 mm

**Packaging**

Dispenser box containing 6  
sterile, individually packaged  
implants.